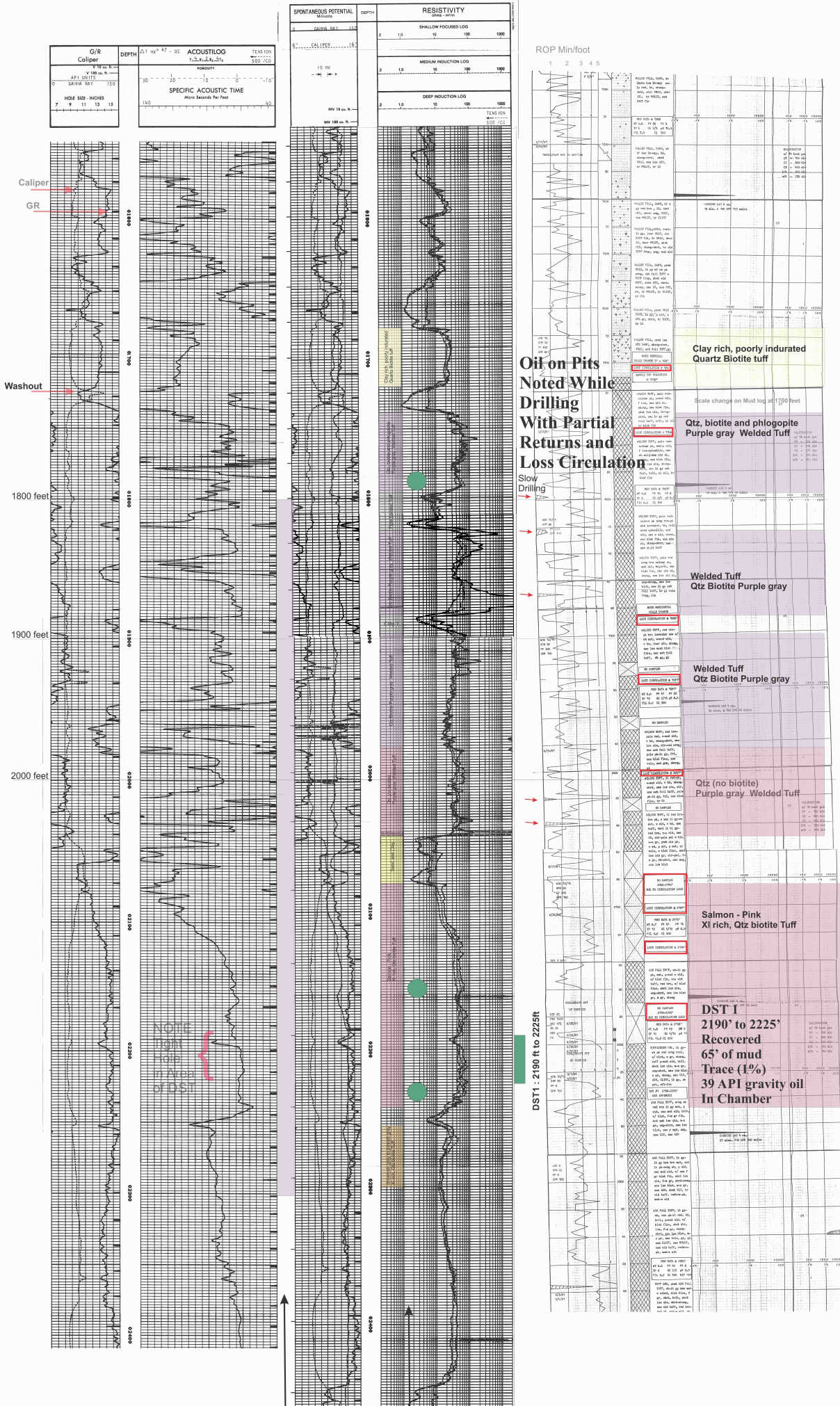


Northwest Exploration "White River Valley #6" Drilled in 1981, to a Total Depth of 6305 feet



Oil on Pits Noted While Drilling With Partial Returns and Loss Circulation

Slow Drilling

DST 1 - 2190 ft to 2225ft

Clay rich, poorly indurated Quartz Biotite tuff

Scale change on Mud log at 1700 feet

Qtz, biotite and phlogopite Purple gray Welded Tuff

Welded Tuff Qtz Biotite Purple gray

Welded Tuff Qtz Biotite Purple gray

Qtz (no biotite) Purple gray Welded Tuff

Salmon - Pink XI rich, Qtz biotite Tuff

DST 1 - 2190' to 2225' Recovered 65% of mud Trace (1%) 39 API gravity oil In Chamber

Cement from 1800' to 2300' noted on Sonic log.

Sample Shows noted by Wm. J. Ehni