

Borehole Image Processing



BAKER ATLAS

COMPANY PLAINS EXPLORATION

WELL PLUTO 27-1

FIELD WILDCAT

COUNTY WHITE PINE STATE NEVADA

LOCATION:

1865' FSL & 905' FEL

SEC 27 TWP 18N RGE 61E

ELEVATIONS:

KB 7382.6 FT DF 0 FT GL 7357 FT

DATE 6 JUL 2007 ECC 7079.02

IN MAKING INTERPRETATIONS OF LOGS OUR EMPLOYEES WILL GIVE CUSTOMER THE BENEFIT OF THEIR BEST JUDGEMENT. BUT SINCE ALL INTERPRETATIONS ARE OPINIONS BASED ON INFERENCES FROM ELECTRICAL OR OTHER MEASUREMENTS, WE CANNOT, AND WE DO NOT GUARANTEE THE ACCURACY OR CORRECTNESS OF ANY INTERPRETATION. WE SHALL NOT BE LIABLE OR RESPONSIBLE FOR ANY LOSS, COST, DAMAGES, OR EXPENSES WHATSOEVER INCURRED OR SUSTAINED BY THE CUSTOMER RESULTING FROM ANY INTERPRETATION MADE BY ANY OF OUR EMPLOYEES.

REMARKS

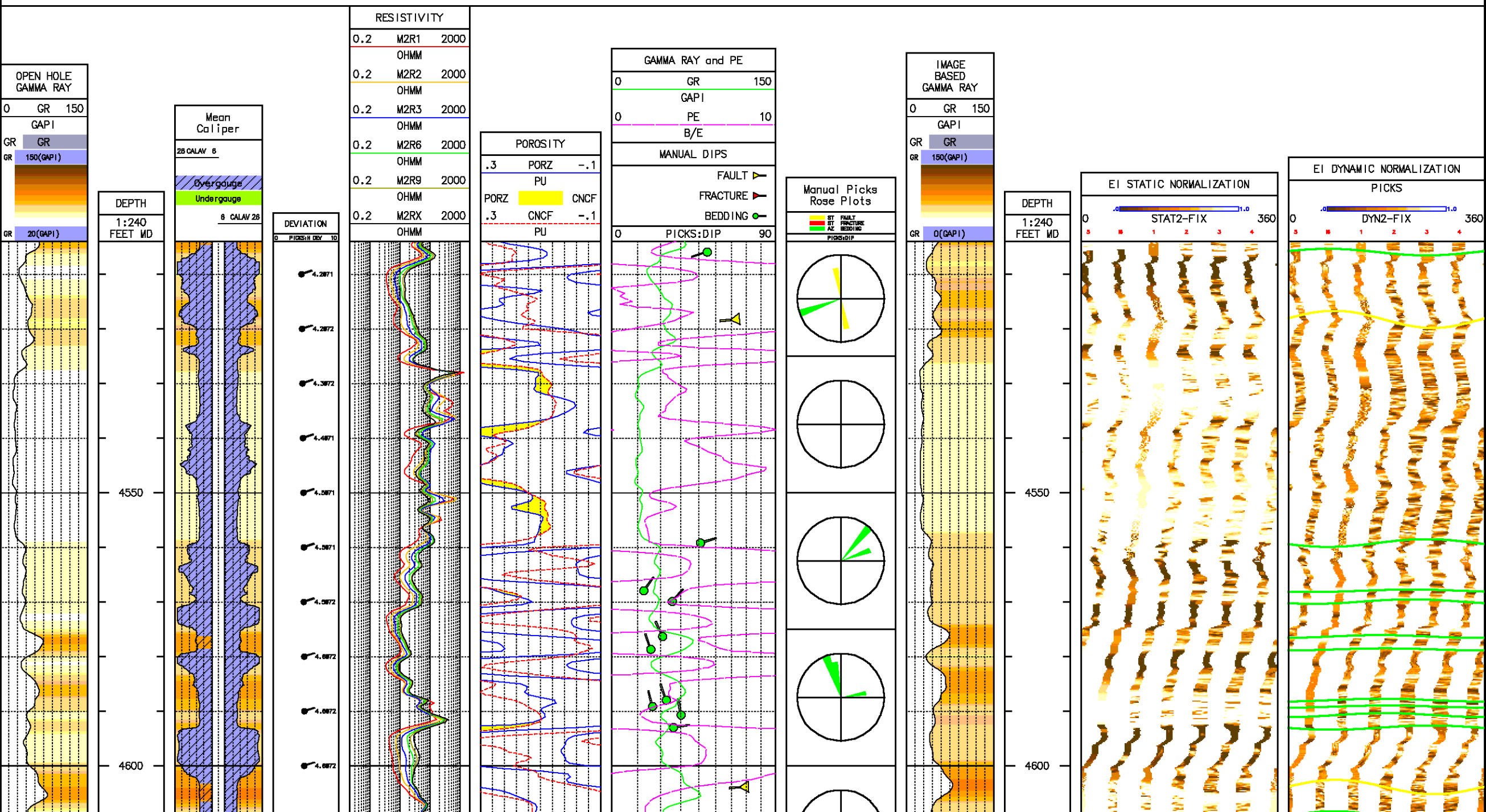
DATA MAY BE UNRELIABLE IN AREAS OF WASHOUTS AND TENSION PULLS.

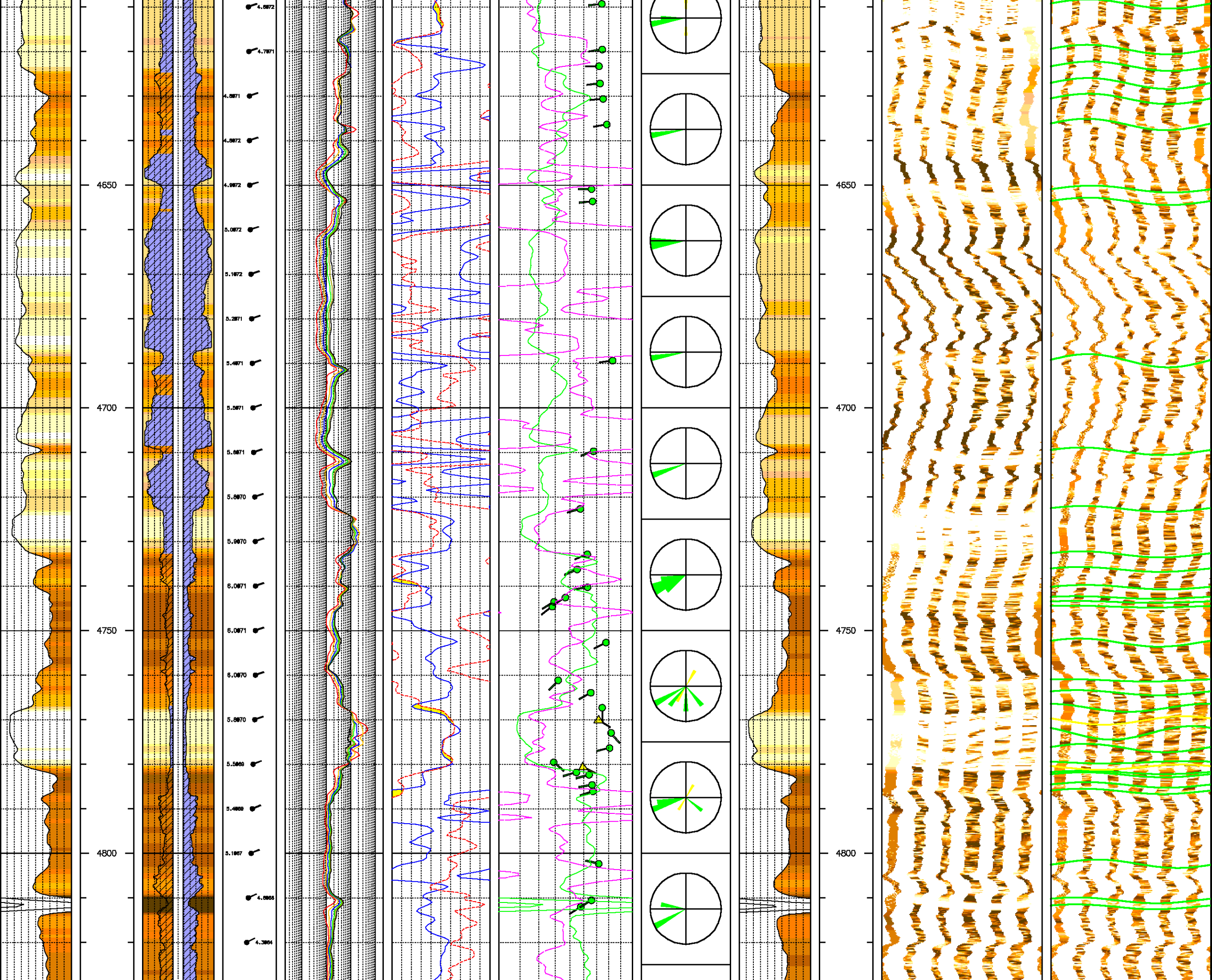
MAGNETIC DECLINATION CORRECTION: 13.4 DEGREES.

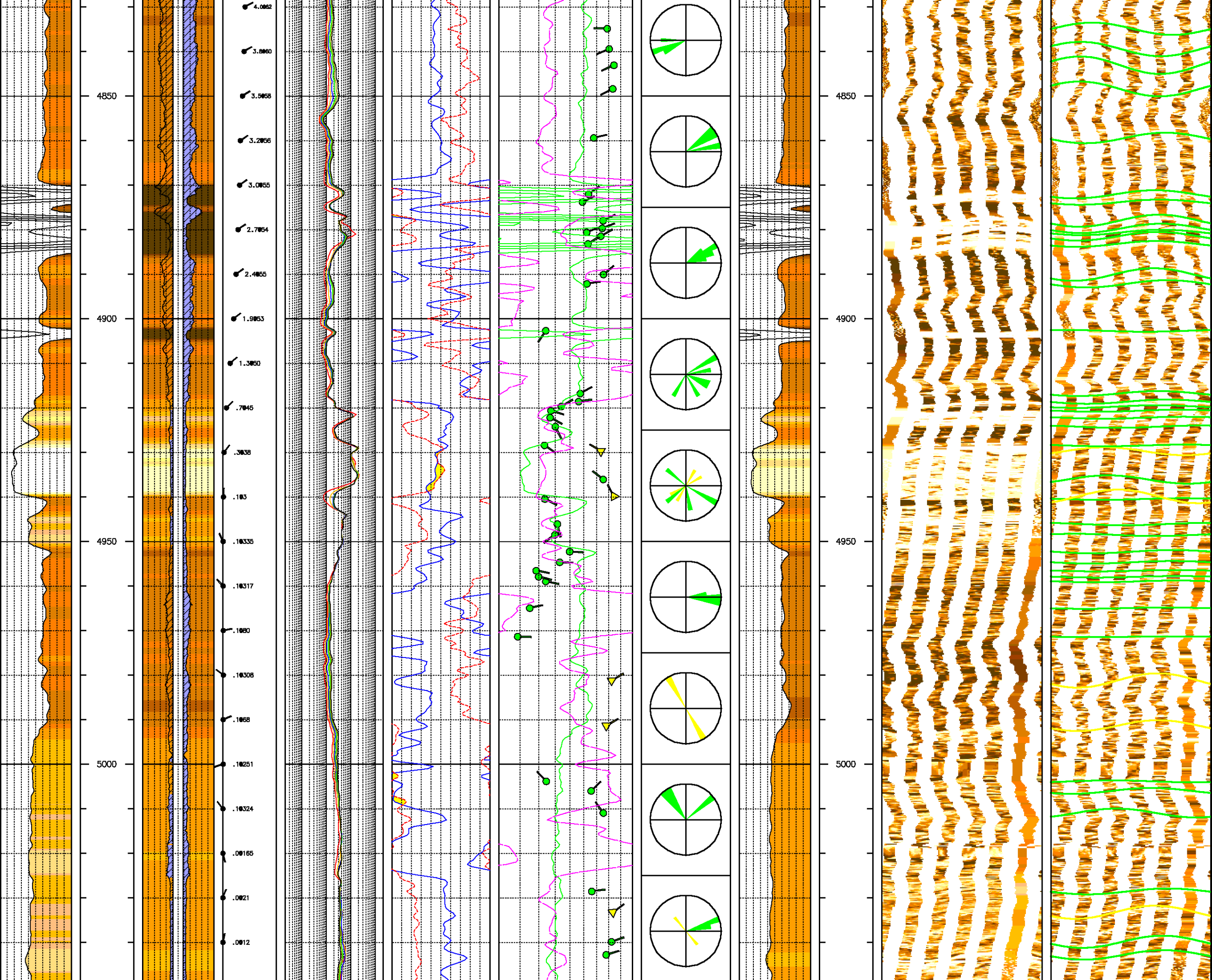
LOG ANALYSTS: M. GUIDRY; S. KOSTKA

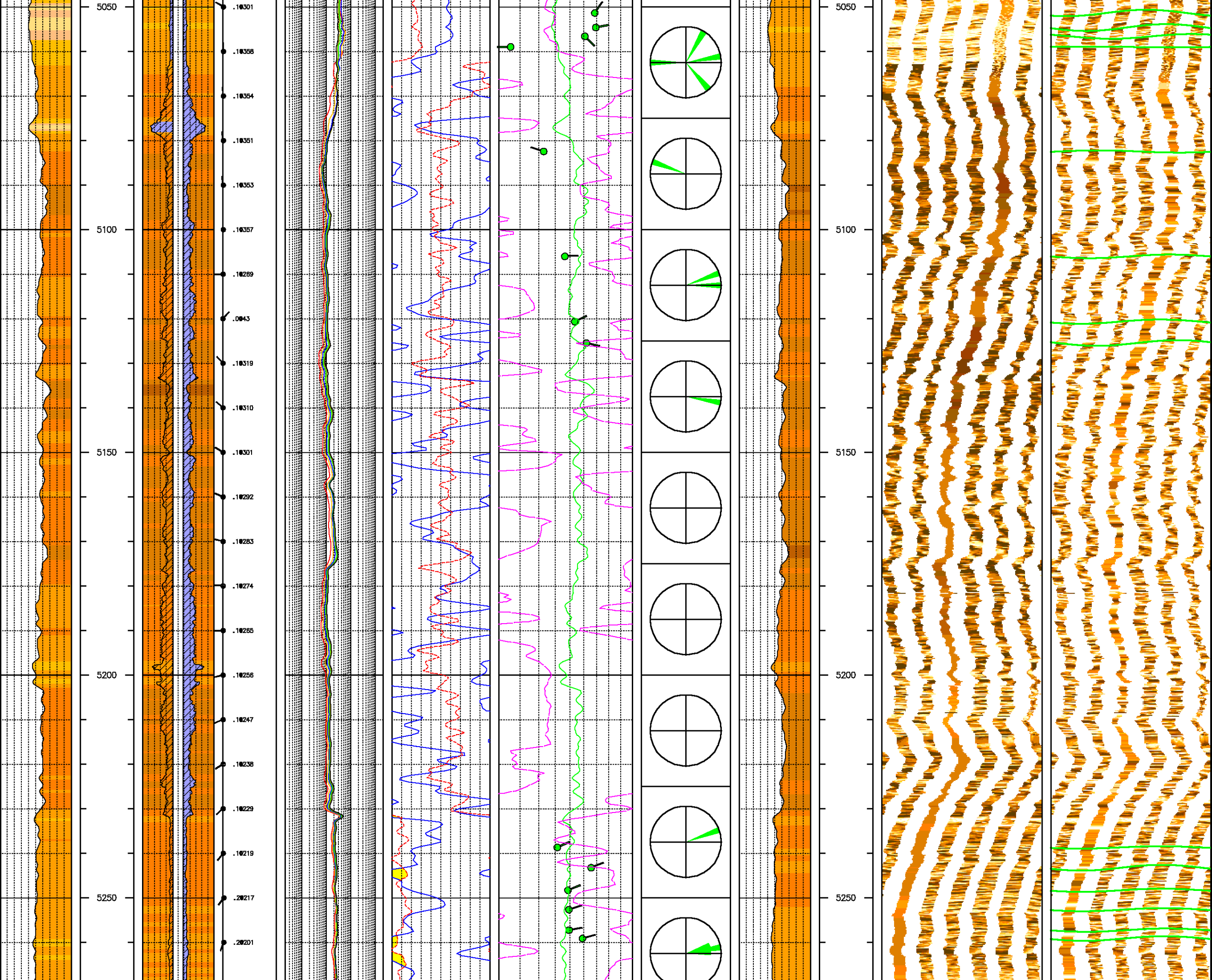
LOG INTERVAL 5900' TO 6100' APPEARS TO INDICATE FAULTING AT NUMEROUS DEPTHS BUT DEFORMATION WITHIN THE INTERVAL MAKES IT DIFFICULT TO IDENTIFY THE EXACT DEPTHS AT WHICH THE FAULTS OCCUR. FAULTING THROUGHOUT THE ENTIRE INTERVAL TENDS TO COINCIDE WITH ELEVATED GAMMA RAY READINGS AND BORHOLE WASHOUT.

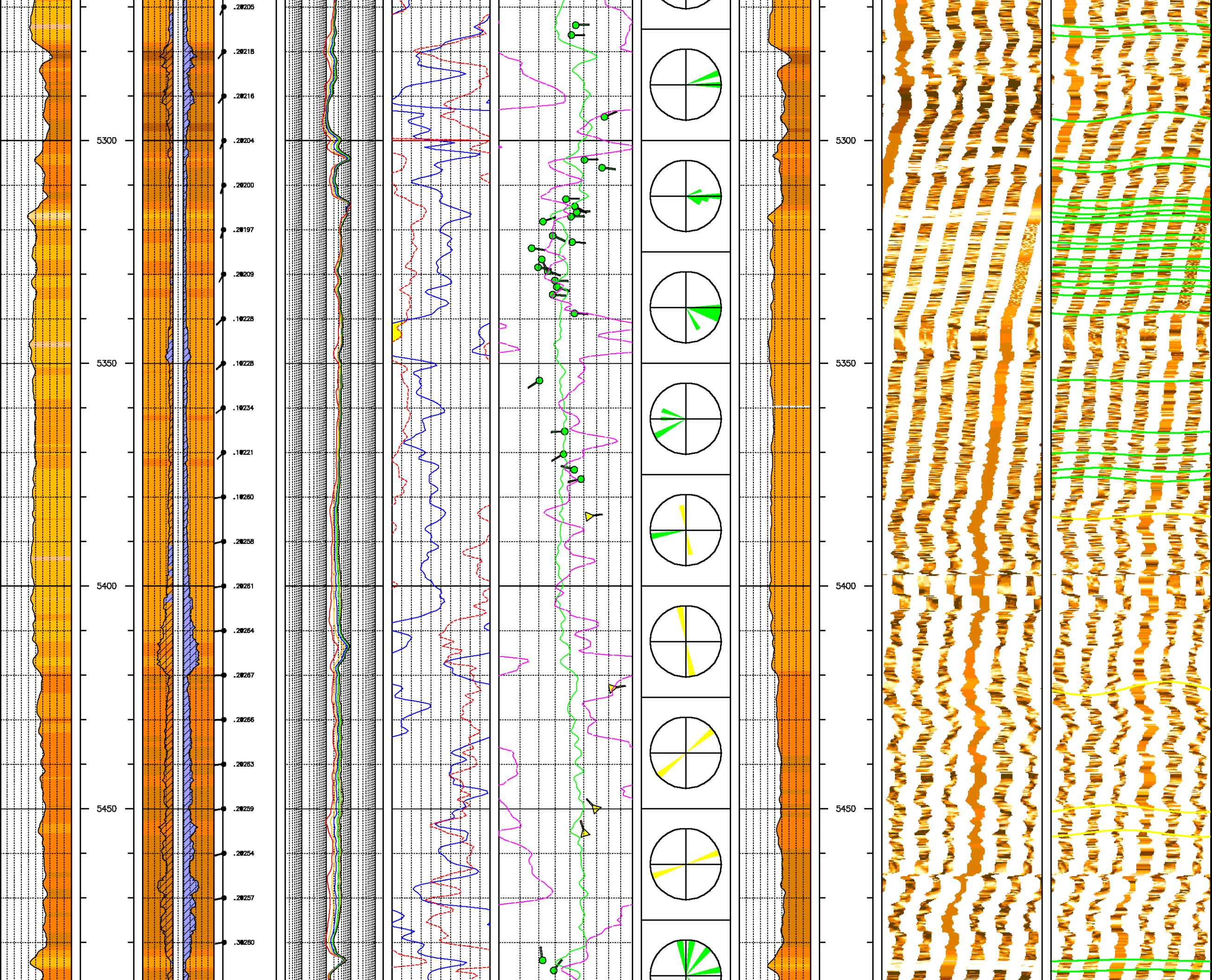
Scale: 5 inch = 100 feet
DEPTH RANGE: 4504.00-5840.00 FEET

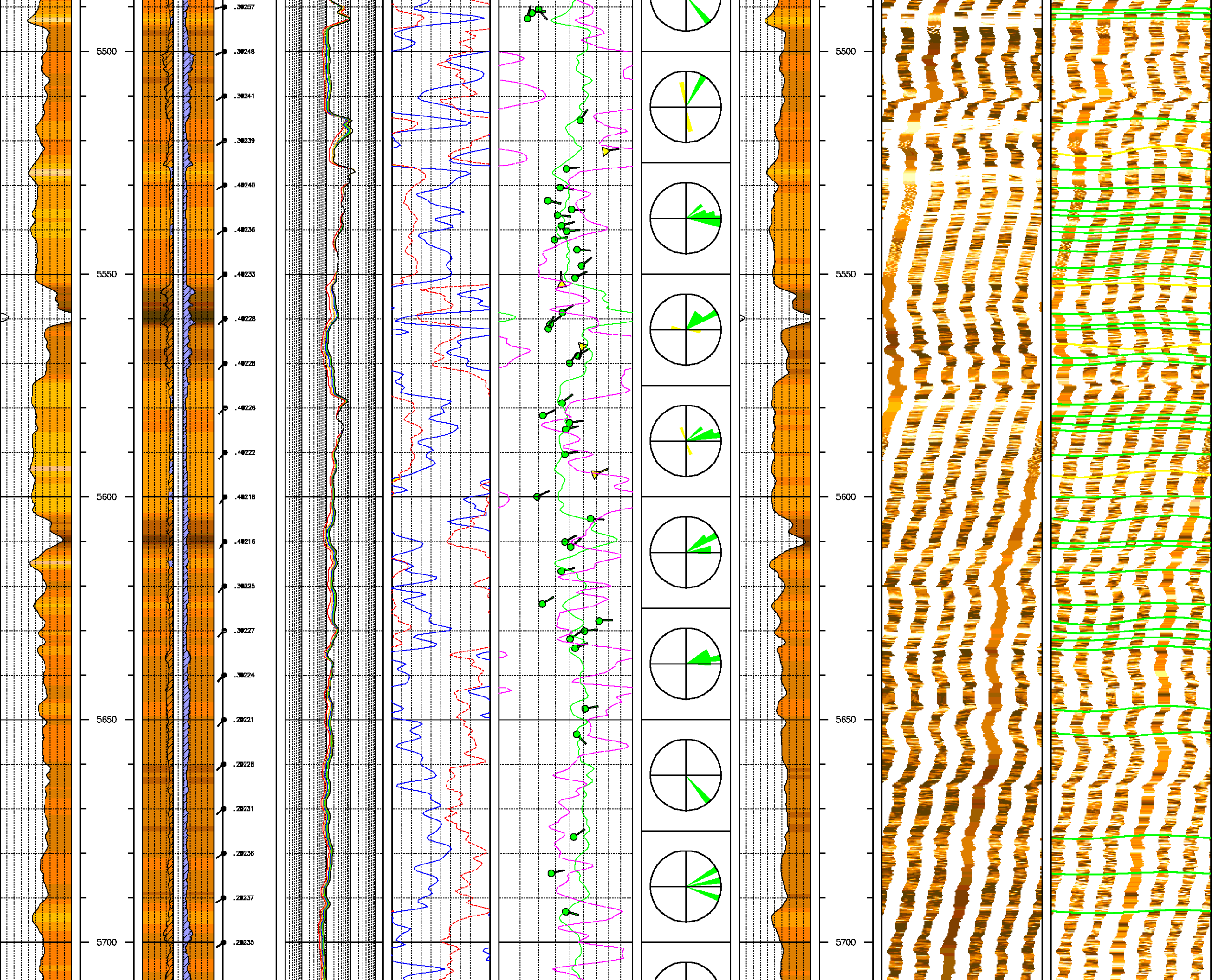


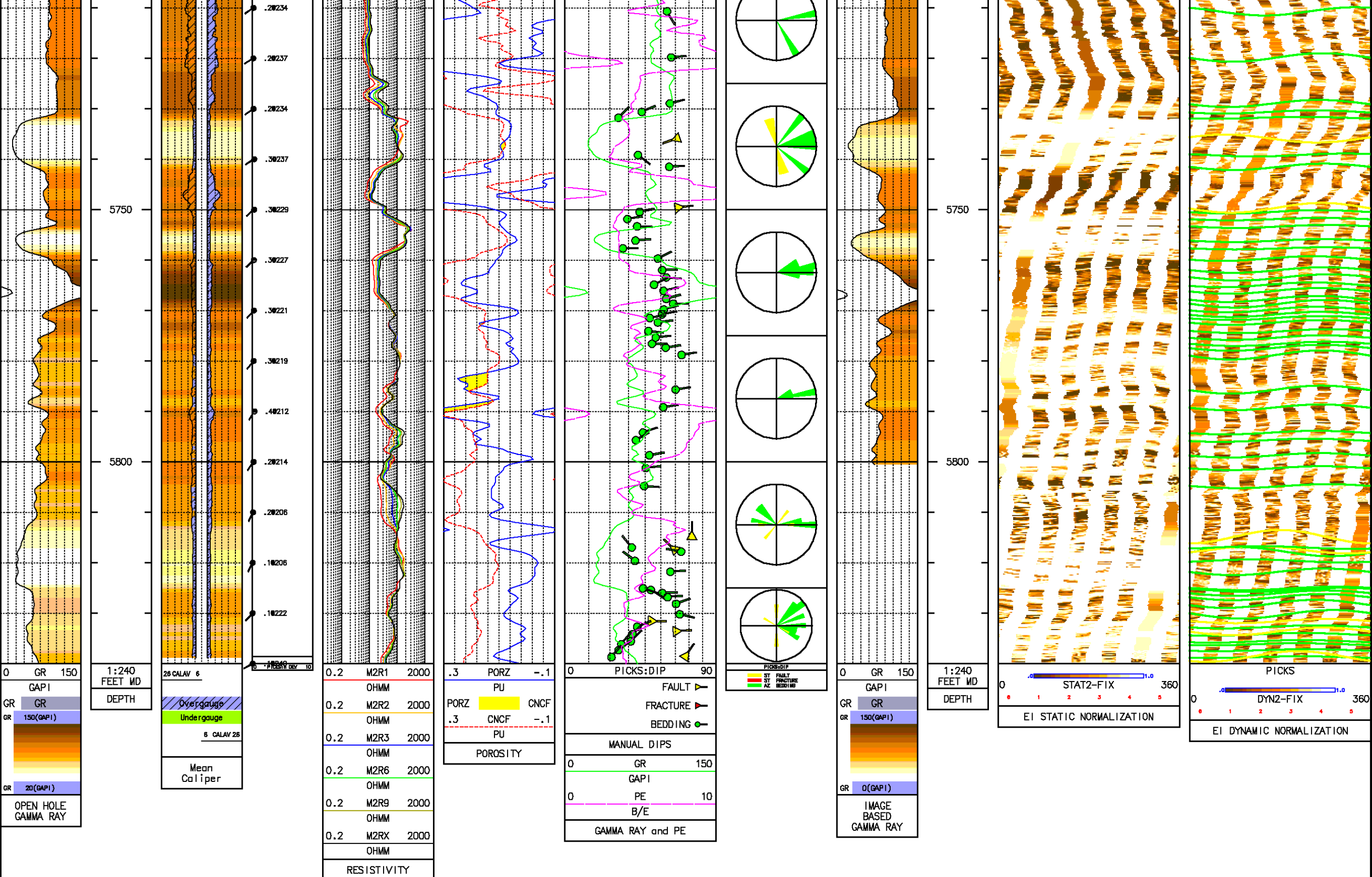












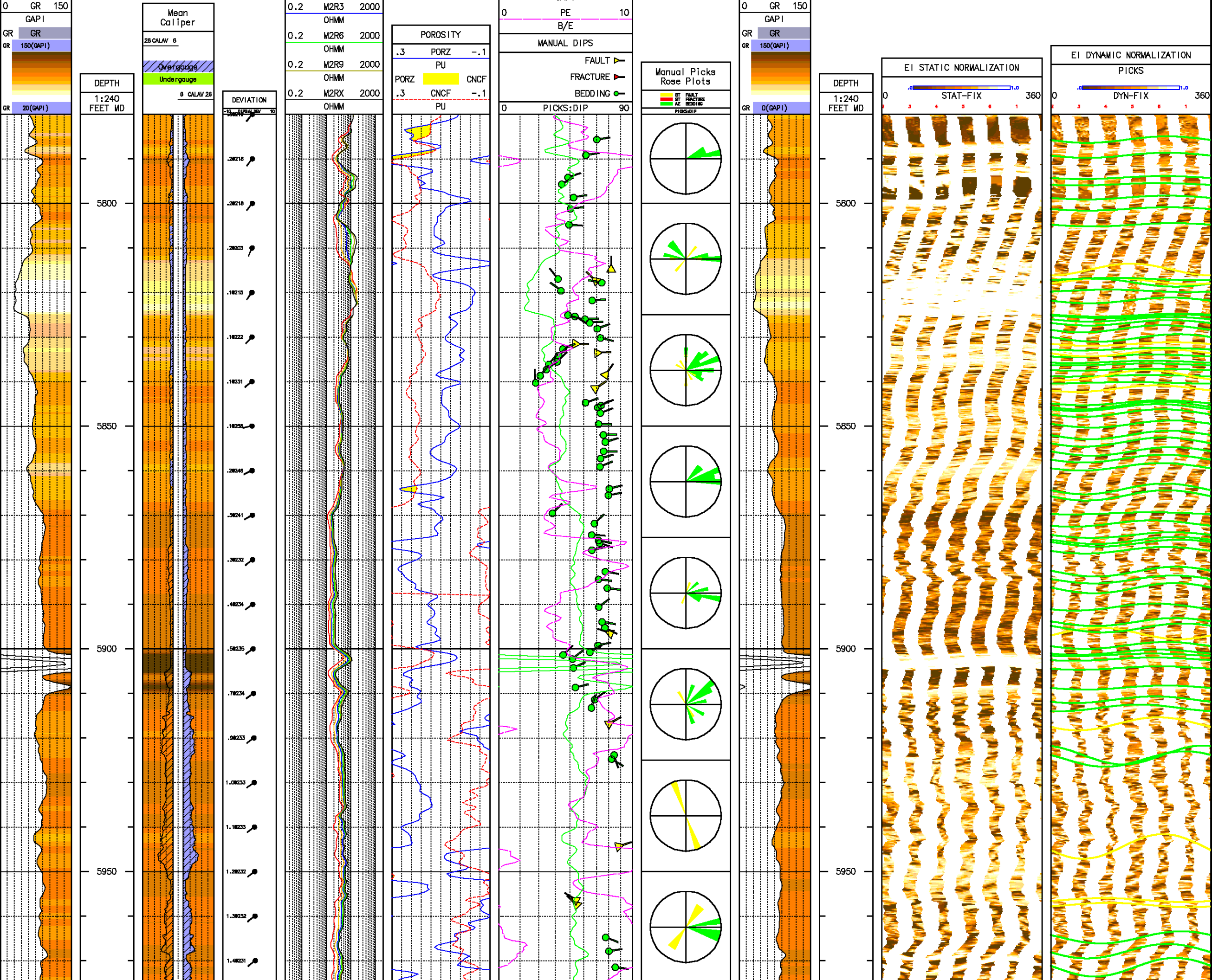
Scale: 5 inch = 100 feet
 DEPTH RANGE: 5780.00-6780.00 FEET

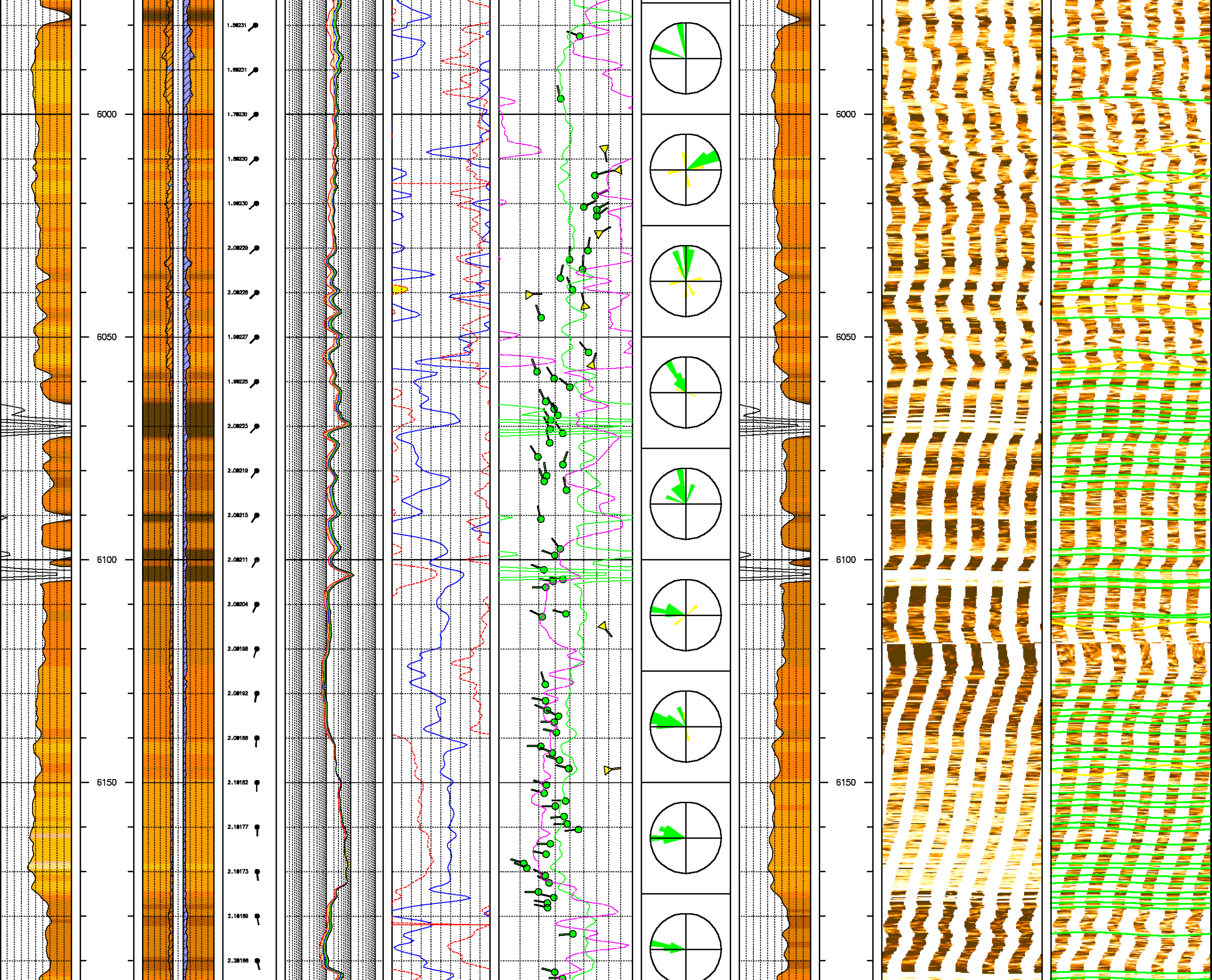
OPEN HOLE
GAMMA RAY

RESISTIVITY		
0.2	M2R1	2000
	OHMM	
0.2	M2R2	2000
	OHMM	

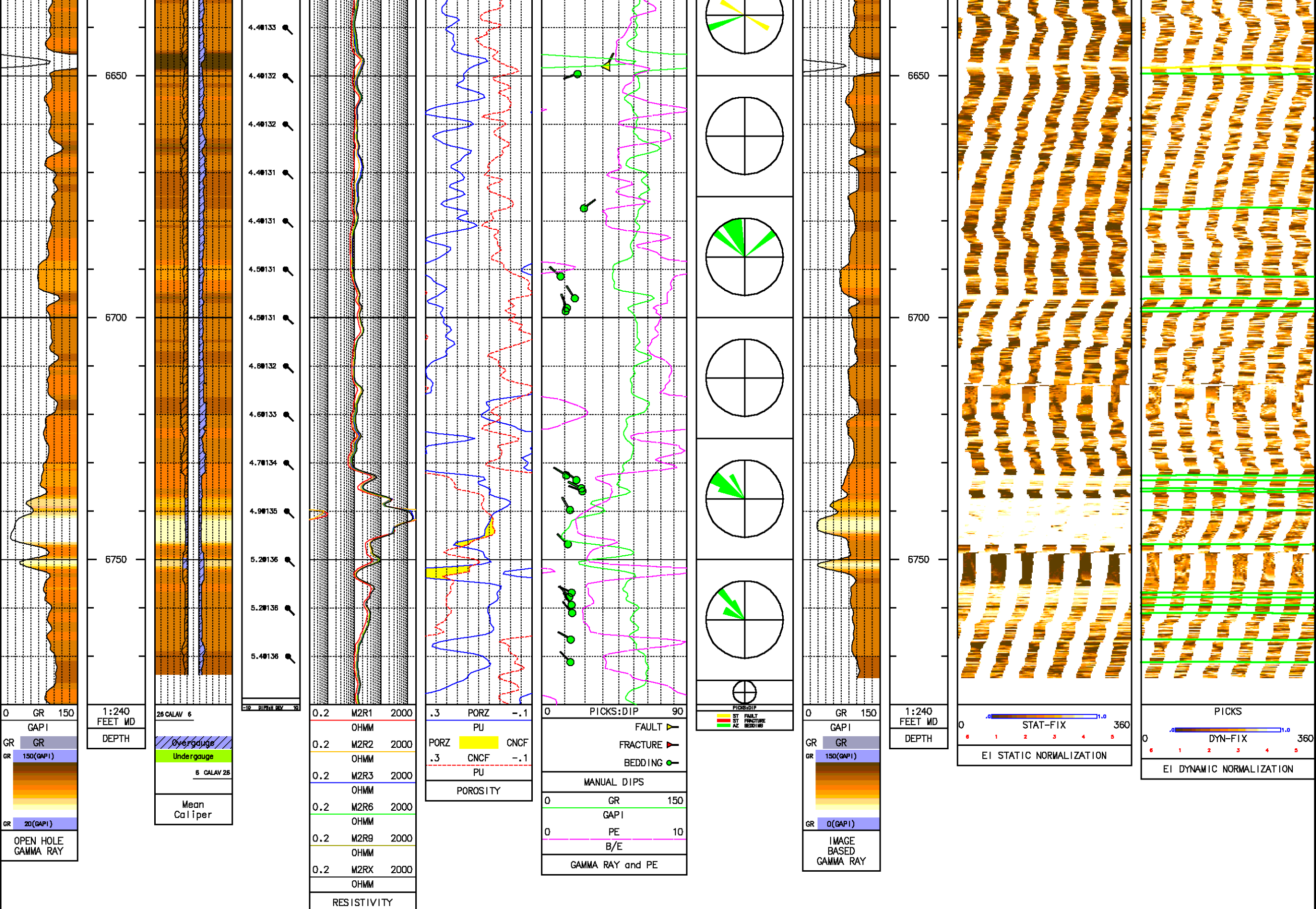
GAMMA RAY and PE		
0	GR	150
	GAPI	

IMAGE
BASED
GAMMA RAY









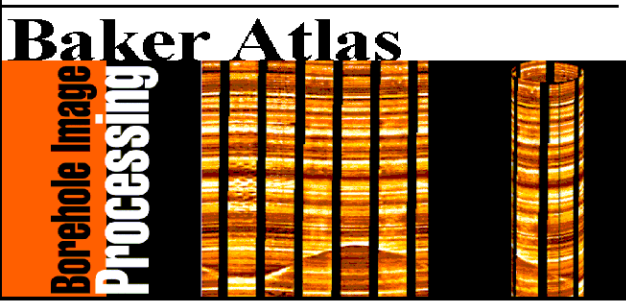
COMPANY
WELL
FIELD
COUNTY

PLAINS EXPLORATION
PLUTO 27-1
WILDCAT
WHITE PINE

STATE NEVADA

FILE NO:

API NO:



COUNTY <u>WHITE PINE</u>	STATE <u>NEVADA</u>
LOCATION: 1865' FSL & 905' FEL	ELEVATIONS: KB 7382.6 FT DF 0 FT GL 7357 FT
SEC <u>27</u> TWP <u>18N</u> RGE <u>61E</u>	DATE <u>6 JUL 2007</u>

